

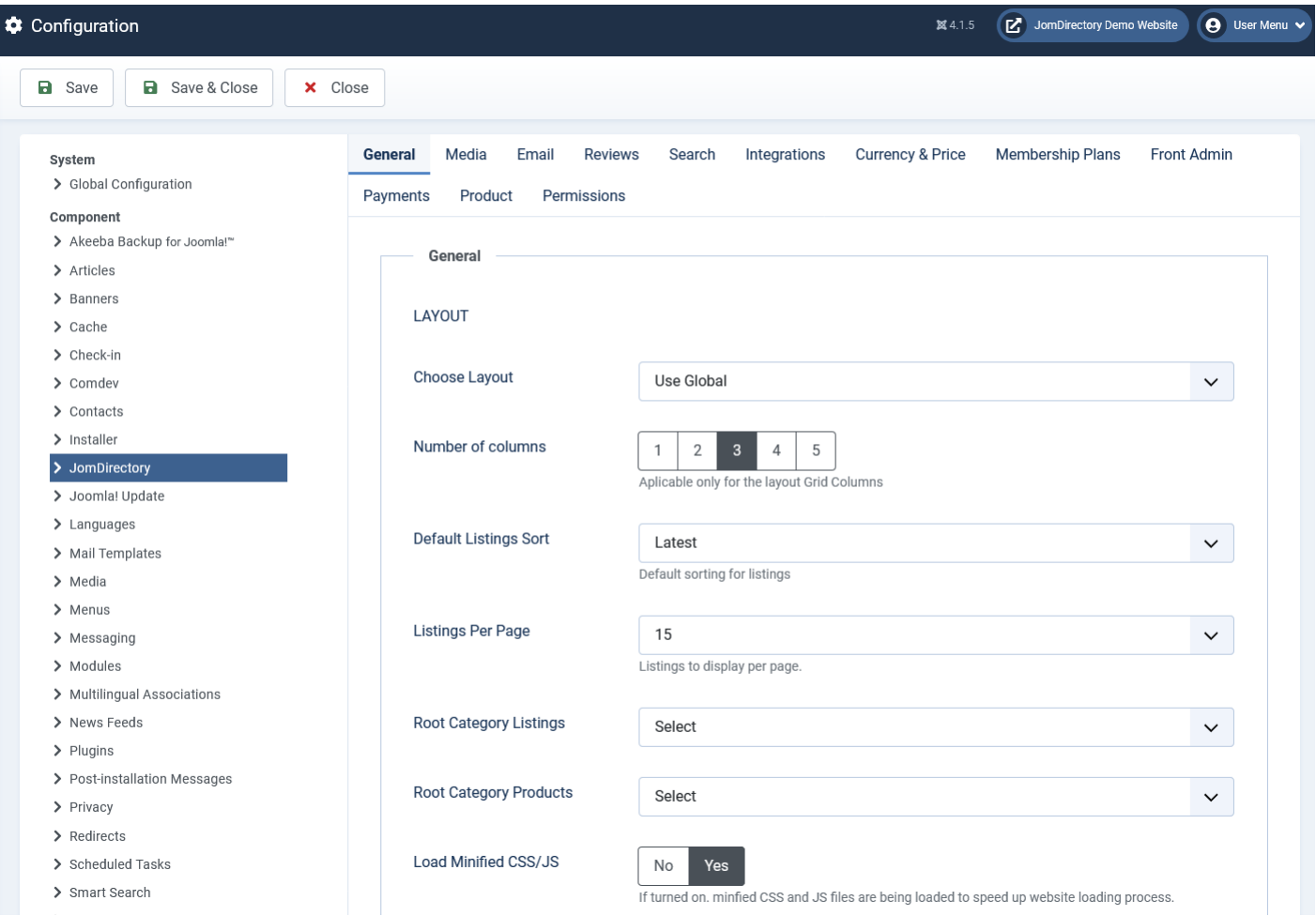
Configuration

Overview

The JomDirectory extension can be configured using the options provided with it. You can control multiple factors such as SEO, Printing, Security, Image widths, and more using the options provided.

General tab

This tab controls the elements for Layout, SEO, Security, and Print options. The following image shows the options available on the General tab.



Screen 1: General tab

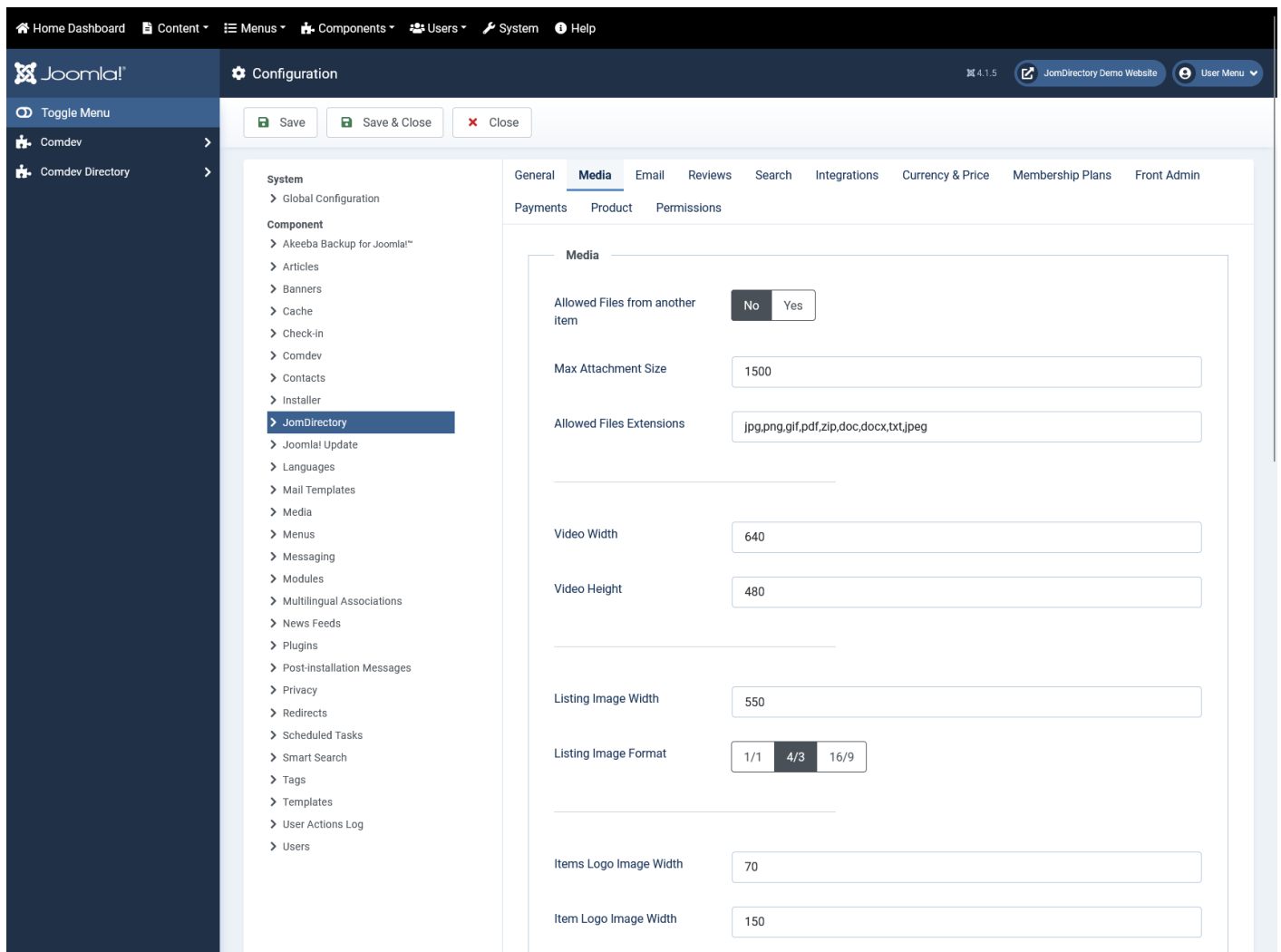
The following table explains the different options seen on the screen.

Layout	Layout	Select a layout based on existing components. Global layout is selected by default.
	Color Scheme	Select Lite, Silver, or Simple scheme. Current build have only one color scheme available.
	Default Listings Sort	Select the Listings from the following options: <ul style="list-style-type: none"> • Latest • Updated • Alphabetically • Most Viewed
	Listings Per Page	Select 15, 30, or 60 listings per page.
	Premium Listings on Top	Enable to see premium listings on top.
Layout Elements	Enable Print	Enable the “Print” button on listing pages.
	Enable Tell a Friend	Enable the “Tell a Friend” button on listing pages.
	Enable Features	Enables featured listing on the page.
	Attachments	Enable adding attachments to listings.
	Enable Save Listings	Enable the “Save” button on listing pages.
	Enable Social Networking	Enable social networking buttons on listing pages.
	Enable User Logo	Enable to display user logo for listing.
	Enable Address	Show the listing address on listing pages.
	Enable Short Descr.	Enable short description.
	Enable Youtube	Enable YouTube video embedded on listing pages.

	Item Map	Enable google map in the detailed view - location tab
	Enable Image	Enable images to be displayed for listing.
	Listings Map	Enable Google map on the listings (items menu link)
	Enable Date	Enable date on listings
SEO	Maximum Characters for Meta Title	The maximum amount of characters used in the meta title.
	Maximum Characters for Meta Description	The maximum amount of characters used in the meta-description.
Print	Print Location	Print the map on print requests.
	Print Reviews	Print reviews available for the listing.
Other	Enable Alias For Non-English Characters	Enable to provide ability to add alias for non-english characters.
	Enable Powered By Link	Enable the “powered by” link on listing pages.

Media tab

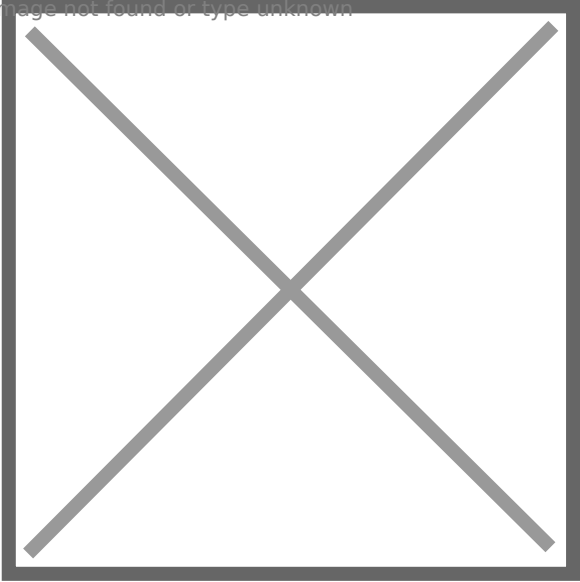
This tab provides options to control display of media such as images or videos on the listing pages.

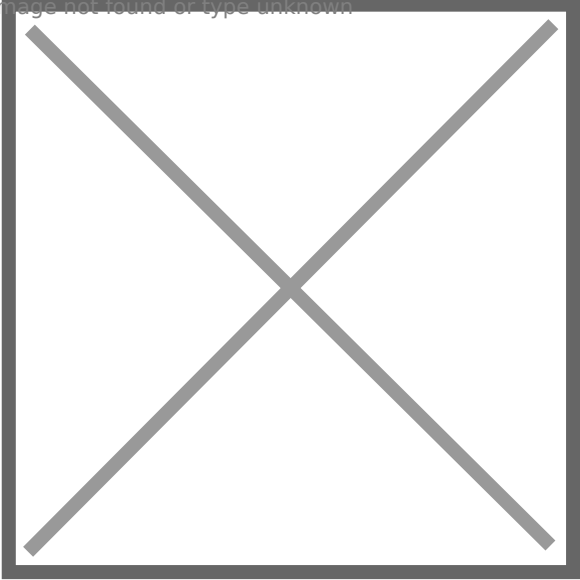


Screen 2: Media tab

The following table explains the options seen on the screen.

Default Image Library	Select the default image library for the listings component between “GD” and “iMagick”. For more information see: http://en.wikipedia.org/wiki/GD_Graphics_Library http://en.wikipedia.org/wiki/Imagick
Max Attachment Size	The component wide settings for maximum Attachment size in kilo-byte. (1024 KB = 1 MB)
Allowed Files Extensions	Comma separated list of allowed attachment file-extensions.
Video Width	Embedded Video width in pixels. (size of the grey-box video player) Default Youtube.com size is either 480×385 for a 4:3 video, or 640×385 for a 16:9 video.

Video Height	Embedded Video height in pixels. (size of the grey-box video player) Default Youtube.com size is either 480×385 for a 4:3 video, or 640×385 for a 16:9 video.
Listing Image Width	The main listing image width in pixels.
Listing Image Format	The format for the main listing image. 1:1 = Image will be unchanged. 4:3 = image will be resized to 4:3 format. 16:9 = Image will be resized to 10:9 format.
Items Logo Image Width	Image width in pixels for Items Logo on the listing page.
Item Logo Image Width	Image width in pixels for Item Logo on the listing page.
Main Gallery Image Width	Image width in pixels for main gallery image. Ensure that the width value given here is as wide as or more than the slideshow width (generally 800-1200 pixels).If this is not done, the slideshow images will be blurred. <div>Image not found or type unknown.</div> 
Main Gallery Image Height	Image height in pixels for main gallery image.
Main Gallery Image Format	The format for the main gallery image. 1:1 = Image will be unchanged. 4:3 = image will be resized to 4:3 format. 10:9 = Image will be resized to 10:9 format.

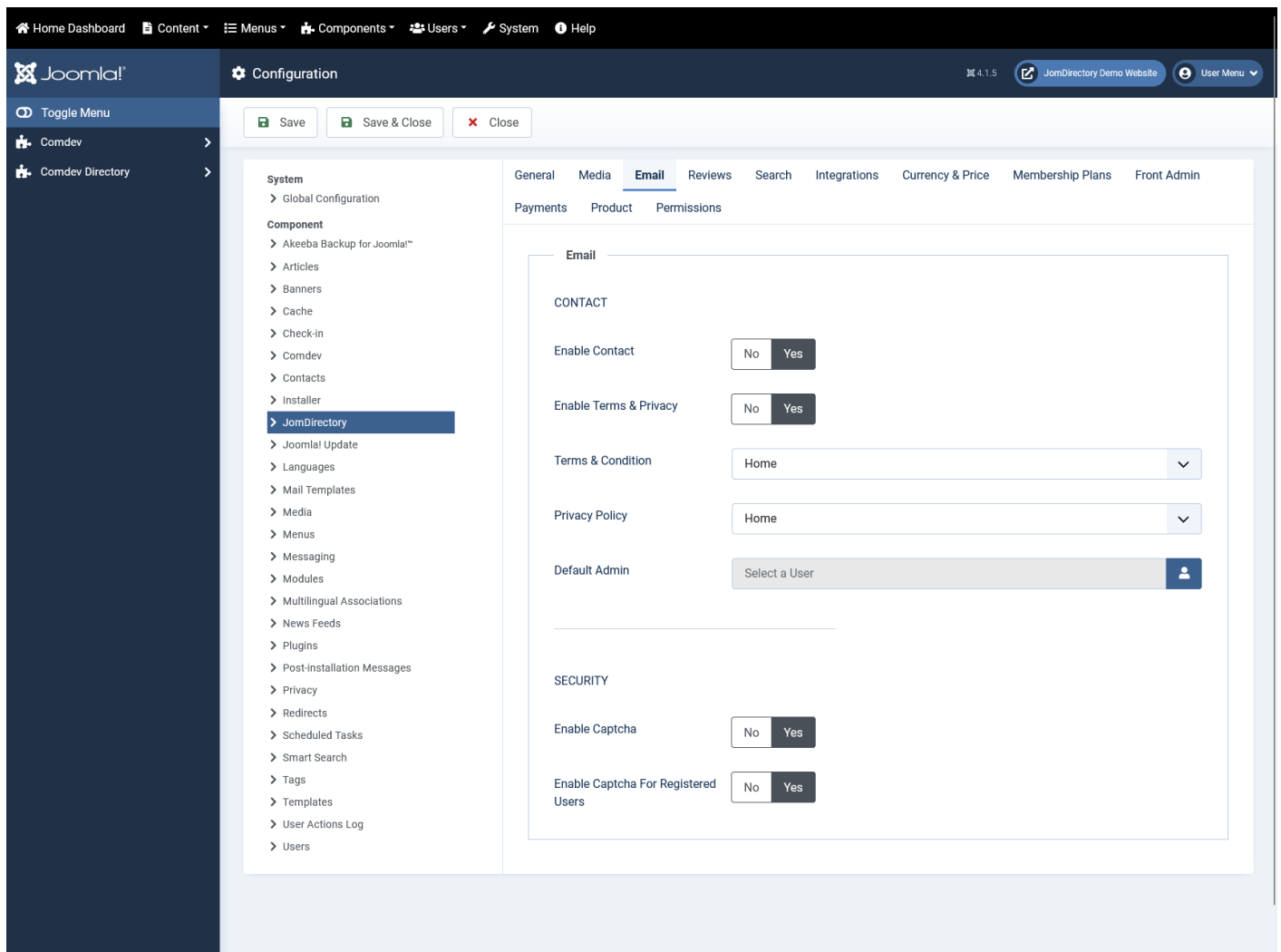
<p>Gallery Image Width</p>	<p>Image width in pixels on the photo gallery on the Items view (Gallery tab). Based on the dimension you provide here, the image can be seen as follows:</p> <p>Image not found or type unknown</p> 
<p>Gallery Image Format</p>	<p>The format for the main listing image.</p> <p>Original = Image as uploaded by user</p> <p>1:1 = Image will be unchanged.</p> <p>4:3 = image will be resized to 4:3 format.</p> <p>10:9 = Image will be resized to 10:9 format.</p>

After the images width or format are changed in the Media tab, ensure that you **clear the cache** for JomDirectory extension. Click System > Clear Cache -> check com_jomcomdev to clear the Joomla cache for our extension.

If possible, image format should be constant for both component and modules. Otherwise, cache issues may appear.

Email tab

This tab provides options to control the email and security options for the JomDirectory extension.



Screen 3: Email tab

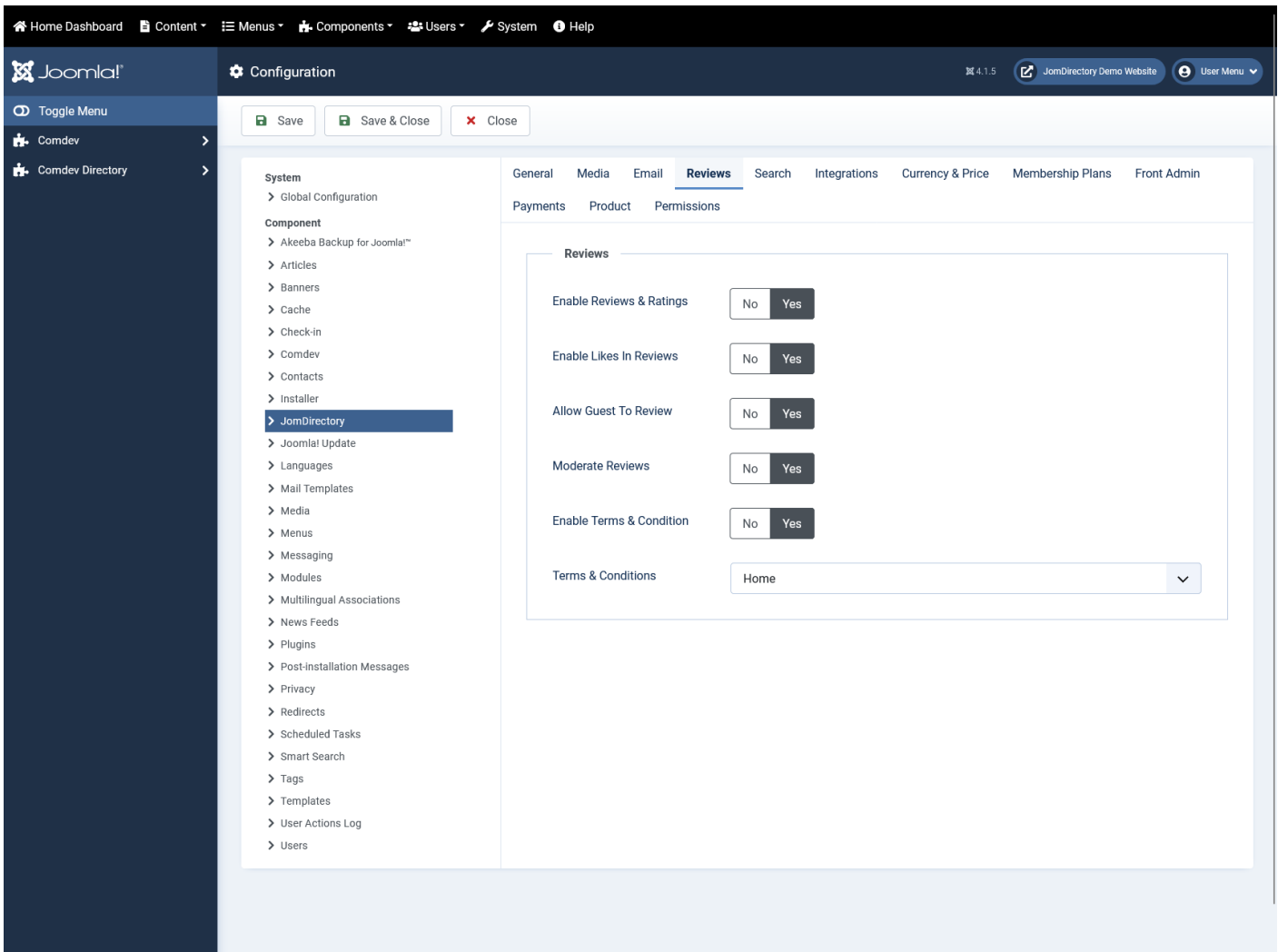
The following table explains the options seen on the screen.

Contact	Enable Contact	Enable the contact function on listing pages.
	Email Send To	Enable Send Email button on listing pages.
	Enable Terms & Privacy	Activate a check-button for TOS and Privacy statements on contact requests.
	Terms & Condition	Provide Terms & Condition statement by category.
	Privacy Policy	Choose Privacy Policy by category.
	Send Email Copy To Admin	Enable to send all email copies to Admin.

Security	Enable Captcha	Enable Captcha for non-registered/logged-in users. Captcha needs to be configured in Plugins -> ReCaptcha and enabled under Joomla Global Configuration
	Enable Captcha for Registered Users	Enable Captcha for registered users as well.

Reviews tab

This tab provides option to enable review ratings when the the **Enable Reviews & Ratings** slider button is set to **Yes** as shown in the following image.



Screen 4: Reviews tab

The following table explains the options seen on the screen.

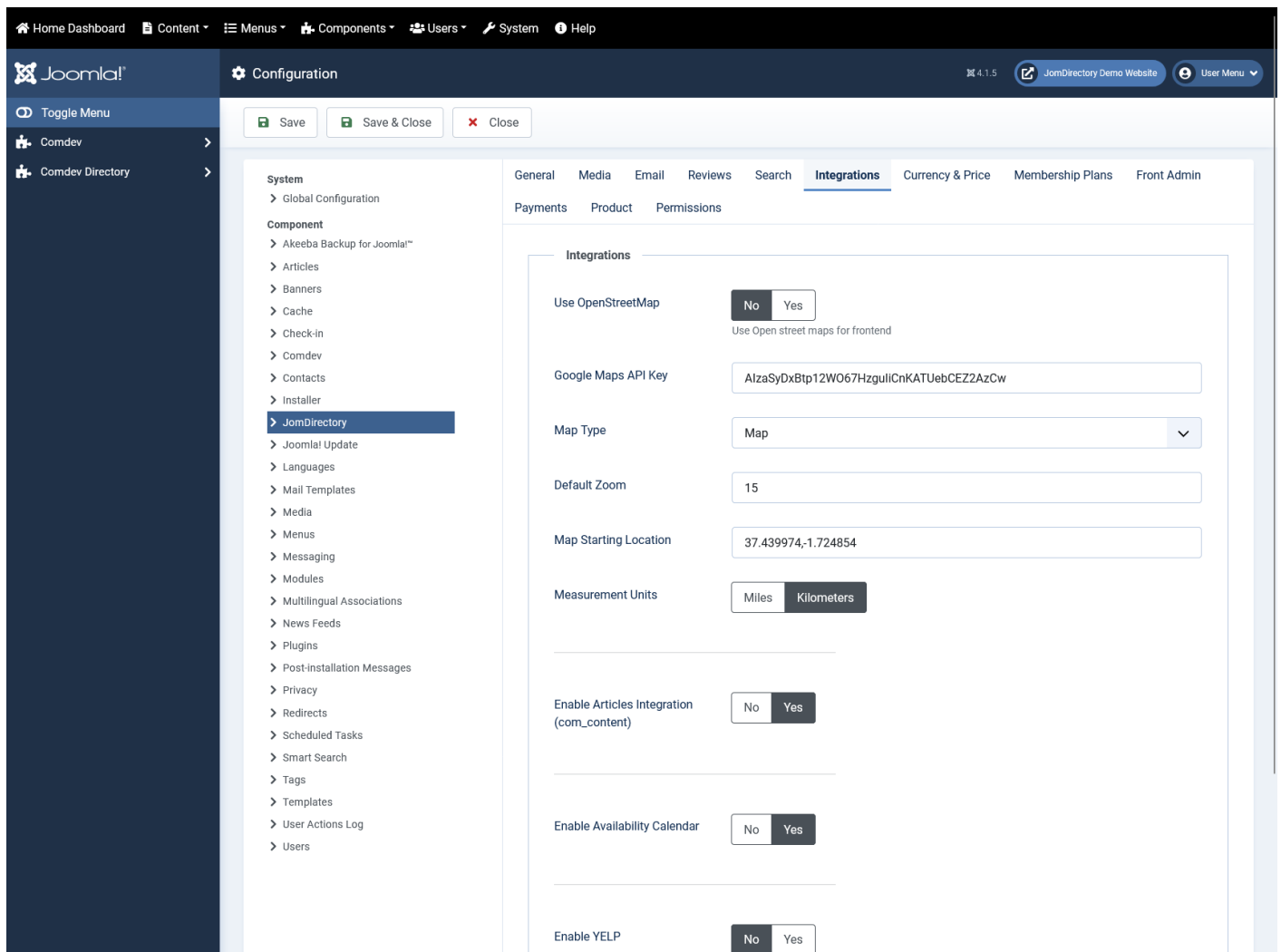
Enable Reviews & Ratings	Enable to make the reviews and ratings option active.
Rating Method	Select the rating method to be used. Available options are circles and stars.
Enable Likes in Reviews	Enable to let users like reviews.
Allow Guest to Review	Enable to let users post guest review without logging in.
Moderate Reviews	Enable to let admin review reviews before making them active.
Enable Terms and Condition	Enable to provide users terms and conditions.
Terms & Conditions	Select the page where you want to display the Terms & Conditions
Enable Captcha for Registered Users	Enable Captcha for registered users as well.

Search tab

This tab provides option to enable search when the the **Enable Search tag** slider button is set to **Yes**

Integrations tab

This tab provides options to control map integration for listings.



Screen 5: Integrations tab

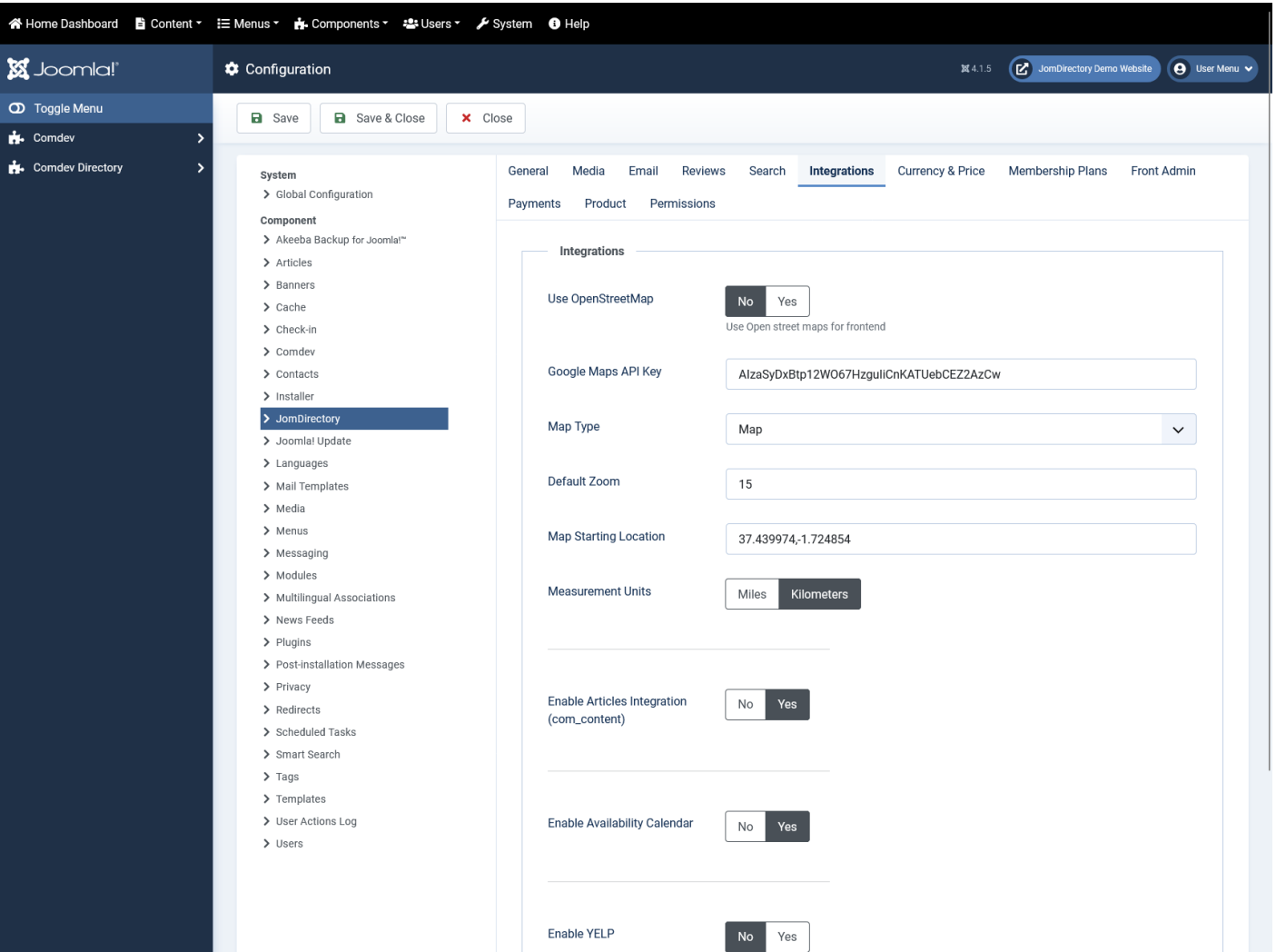
The following table explains the options seen on the screen.

Google Maps API Key	Specify a Google Maps API key. You can create a key by visiting Google's Get a Key documentation (you will need a Google account to register a key).
Map Type	Select the map type from Google maps. <ul style="list-style-type: none"> • Map • Satellite • Hybrid • Terrain
Default Zoom	Select the default zoom factor for the listing map. Listings (Items) map zoom is calculated automatically based on all listings and can't be adjusted, same apply for the ajax map search module.
Map Starting Location	Default location or starting point for map search.

Enable Articles Integration (com_content)	Enable article assign button when adding a listing (below description)
Enable Availability Calendar	Enable to showcase listing availability with every listing.
ShareThis Key	<p>Specify a publisher key for sharing listings via the ShareThis platform.</p> <p>To obtain a key, sign up to ShareThis and retrieve your publisher key from your ShareThis profile.</p>

Currency & Price tab

This tab provides options to control display of currency formats for listings.



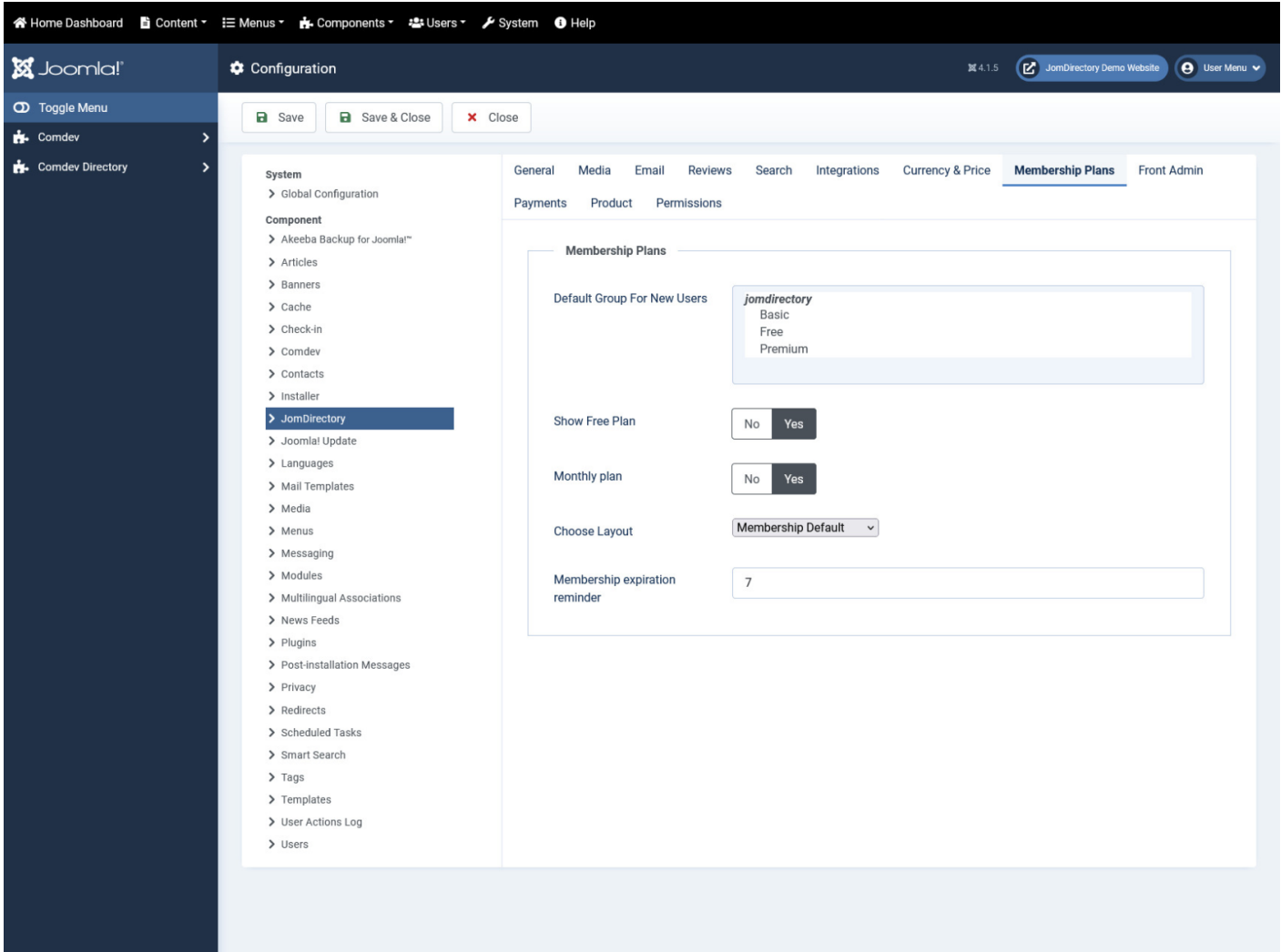
Screen 6: Currency & Price tab

The following table explains options seen on the screen.

Currency	Select the currency to use. Additional currencies can be added by editing a config file administrator/components/com_JomDirectory/config.xml
Vat	The current vat rate for estates in the operating country.
Decimal Digits	Select the number of decimal digits required.
Number Format	Select the number format most suitable for your currency.
Display Digits	Select the format for the digits.
Currency Position	Select if your currency sign will appear before or after the price.

Membership Plans

This tab controls membership options that you want to set for your site.



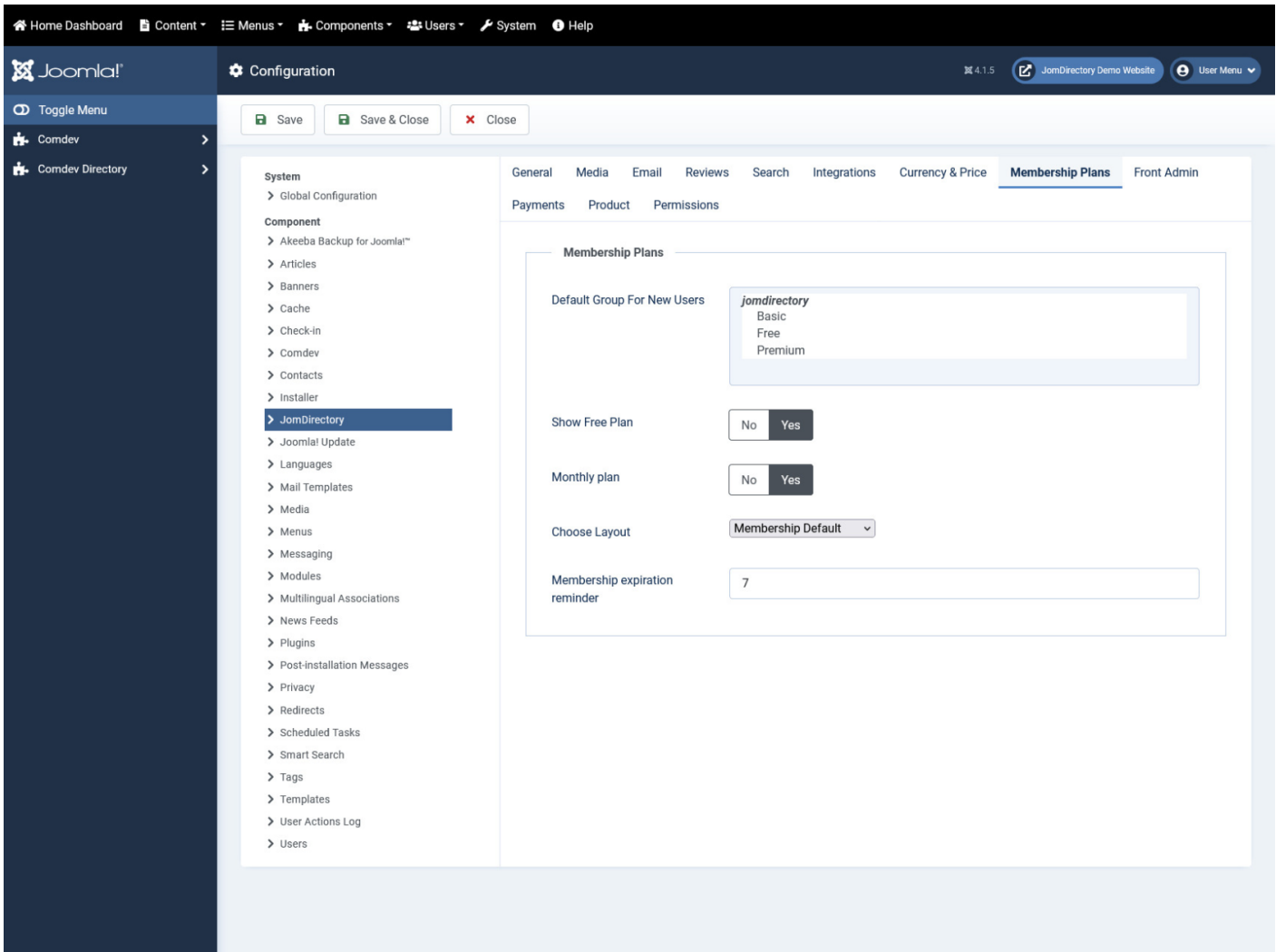
Screen 8: Membership Plans

The following table explains options seen on the screen.

Default Group For New Users	Select the membership plan that new users are grouped in by default.
Show Free Plan	Enable to display free plan.
Monthly Plan	Enable to display monthly plan.
Membership expiration reminder	Define the days before expiration reminder will be sent.

Front Admin

This tab controls how the menu links are seen on the front admin for JomDirectory. It also provides other options related to front admin.



Screen 7: Front Admin tab

The following table explains the options seen on the screen.

	Welcome Article-ID	Set the component's welcome article from Joomla articles.
	Help Article-ID	Set the component's help article from Joomla articles.
	Profile Menu Link	Set the page for the Profile Menu Link.
	Login Menu Link	Set the page for the Login Menu Link.
	View Profile Menu Link	Set the page for the View Profile Menu Link.
Enable Features	Approve User's Listings	When listings are added from the Front Admin, they will not be published unless the site admin approves it.
	Listing Email Notification	Enable to send an email to user about listing created.
	Reviews Approval By Users	Turn review approval on or off when you login from the Front Admin.
	Enable Location	Enable to auto map location.
	Enable Availability Calendar	Enable to display availability calendar for a listing.
Payment Settings	Enable Paypal	Enable the Paypal facility for user subscriptions.
	Paypal Email Address	Provide the Paypal email that will receive the payments.
	PDT token	Provide your Paypal PDT token for secure payments.
	Use Paypal Sandbox	Enable for testing your configuration with the Paypal sandbox facility.
	Paypal Sandbox Merchant Email	Enable to set your merchant sandbox email address for receiving payments.
	Paymens success article ID	Provide the article from Joomla articles that points to the page that the user will go to after payment is made.

Permissions

This tab provides options to control permissions for different groups.

