

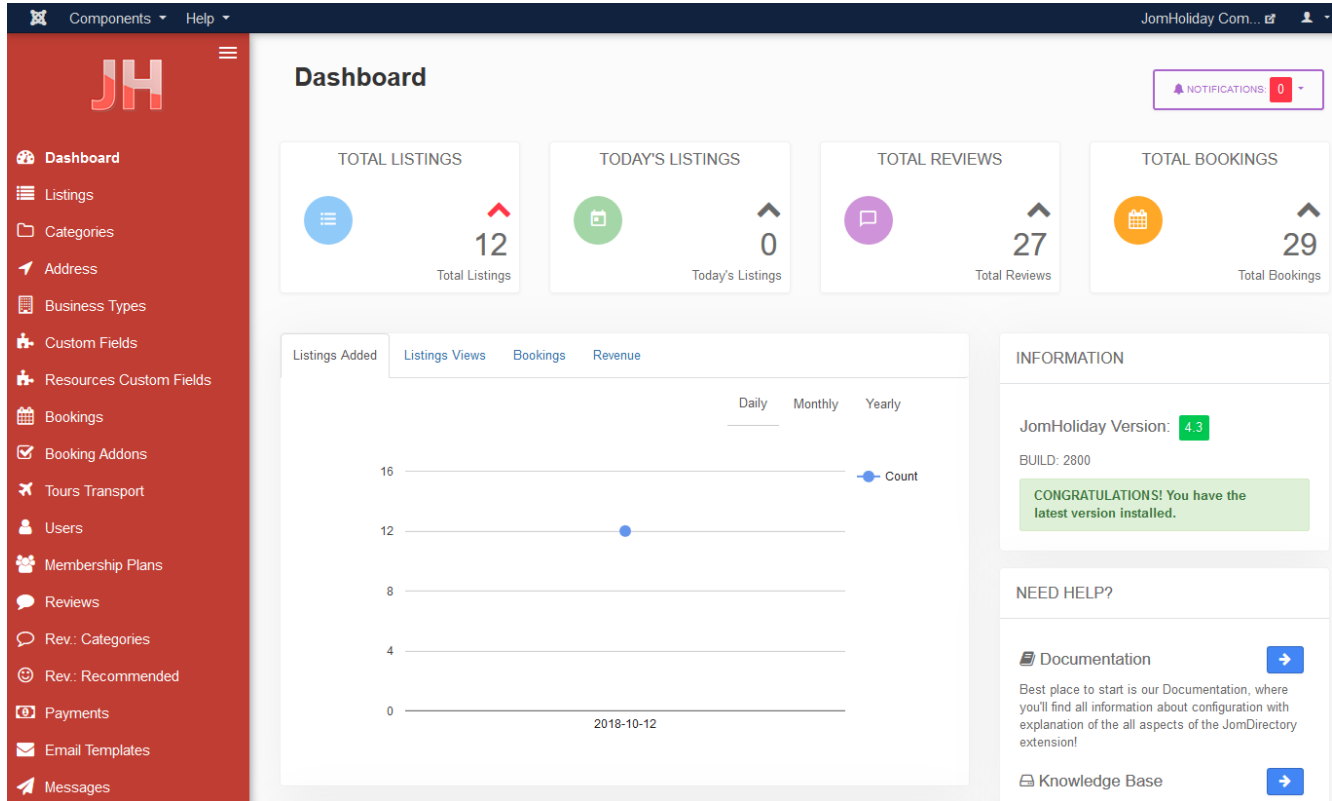
Dashboard

Table Of Contents

- 1 [Overview](#)
- 2 [Menu Items](#)
- 3 [System Configuration Checks](#)

Overview

Administration dashboard gives you an overview of all the activities you can do using the JomHoliday extension. It provides you a view of all the menu items, system configuration checks, license information, and links to the documentation.



Screen 1: Dashboard screen

Menu Items

The menu items are present in a grid format for easy access. The following image shows the Menu items present on the dashboard screen.

Screen 2: Menu items area

The following table provides an explanation about different menu items available:

Menu Items	Usage
Dashboard	Home or dashboard for the JomHoliday extension
Listings	Shows the Listings administration screen
Categories	Shows the Categories administration screen
Custom Fields	Shows the Custom Fields administration screen

Resource Custom Fields	Shows the Resource Custom Fields administration screen
Addresses	Shows the Address administration screen
Business Types	Shows the Business Types administration screen
Bookings	Shows the Bookings administration screen
Booking Addons	Shows the Booking addons administration screen
Membership Plans	Shows the Membership Plans administration screen
Messages	Shows the messages received
Reviews: Categories	Shows the Reviews administration screen to add review parameters for each category. For example, Quality, Customer Service, and so on.
Reviews: Recommended	Shows screen to add recommended audience for the listing or category. For example, For young people, Gizmodo, and so on.
Documentation	Access the JomHoliday documentation.

System Configuration Checks

Any configuration problems or current configuration status is displayed in this area as shown in the following screen:

Screen 3: System configuration checks area

SYSTEM CHECKS

Site In Root Directory ✔

Website should be placed inside root of the domain e.g. www.website.com otherwise placed in the directory e.g. www.website.com/folder may cause some of component links or images to not work properly.

Mandatory component menu links ✔

ITEMS menu link is present.

System configured correctly.

Table Of Contents

- [1 Overview](#)
- [2 Menu Items](#)
- [3 System Configuration Checks](#)